

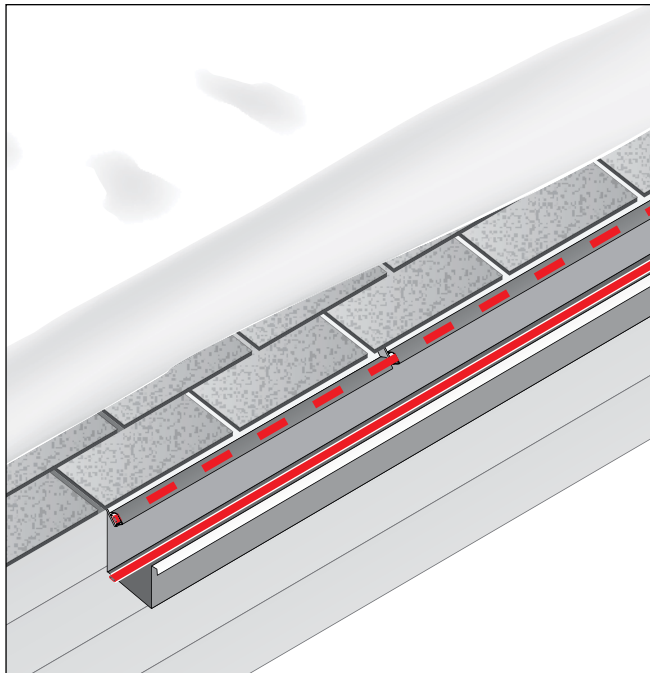


& ASSOCIATES, INC.

heat tracing specialists

## ICE-CUTTER

### Installation and Operation Instructions



#### Description

**Ice-Cutter has many application variables so these recommendations are offered as a guide only.**

Ice-Cutter® is an aluminum flashing designed to be used as a heat conductive plate to facilitate in snow & ice removal from roof edges. The system is for use only with RG self-regulating or FEP constant wattage heating cables certified for use in roof & gutter applications.

TAD shall not be held responsible for any damages or performance issues arising from non-conformance of installation and commissioning procedures. See local codes and NEC Article 427 for heat tracing considerations.

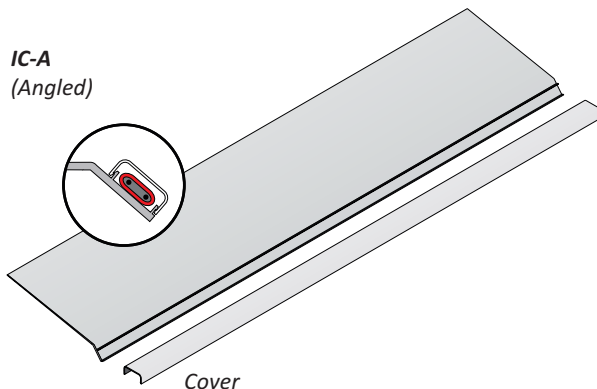
Ice-Cutter is designed to be applied between the roofing and the roof underlayment such as felt. It can be used with various roofing products such as asphalt shingles, aluminum, steel\* and even slate.

Ice-Cutter can be fastened using various methods including screws or adhesives depending on application and building materials. The designer or contractor should contact local building authorities and related authorities such as the electrical inspection department for final inspection approval.

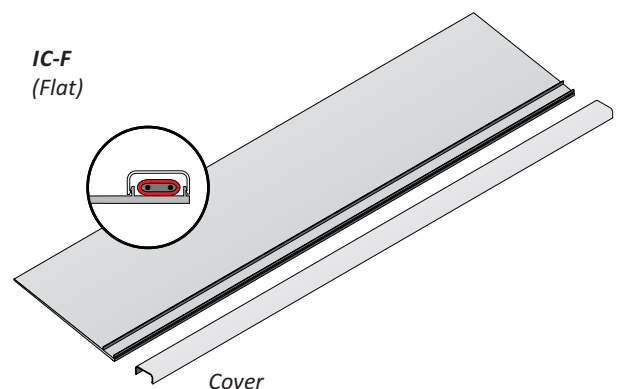
For technical support contact your local TAD representative or TAD at (210)679-8447

\* Ice-Cutter can be ordered with a 6 mil urethane membrane applied to help prevent galvanic oxidation or corrosion when in contact with dissimilar metals.

IC-A  
(Angled)



IC-F  
(Flat)



#### FIRE & SHOCK HAZARD

- Do not use this product with non-approved TAD heating cable.
- The use of this product and its compatibility with various heating cable supplier is at the sole discretion of the system designer or installer.
- Any material that has been cut must be deburred so there are no sharp edges to nick or puncture heating cable.
- Follow heating cable termination instructions for installation of roof and gutter de-icing systems.
- Ensure that all heating cable has been terminated and installed in accordance with installation instructions and proper commissioning procedures have been performed to determine dielectric integrity.
- Ensure cable insulation has not been compromised due to installation

error or damages encountered through shipping or warehousing.

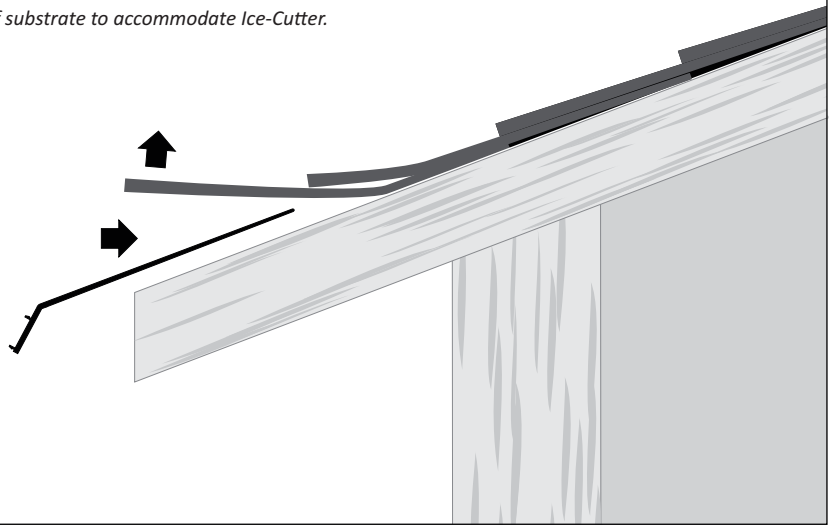
- Cables should be megged using a Megohmmeter capable of producing 2500VDC.
- Ensure system has been de-energized prior to performing any maintenance.

## Ice-Cutter Installation Recommendations

1

**IMPORTANT:** Ice-Cutter flashing can be cut to suit your specific situation. After cutting, Ice-Cutter flashing and covers must be deburred so no sharp edges remain.

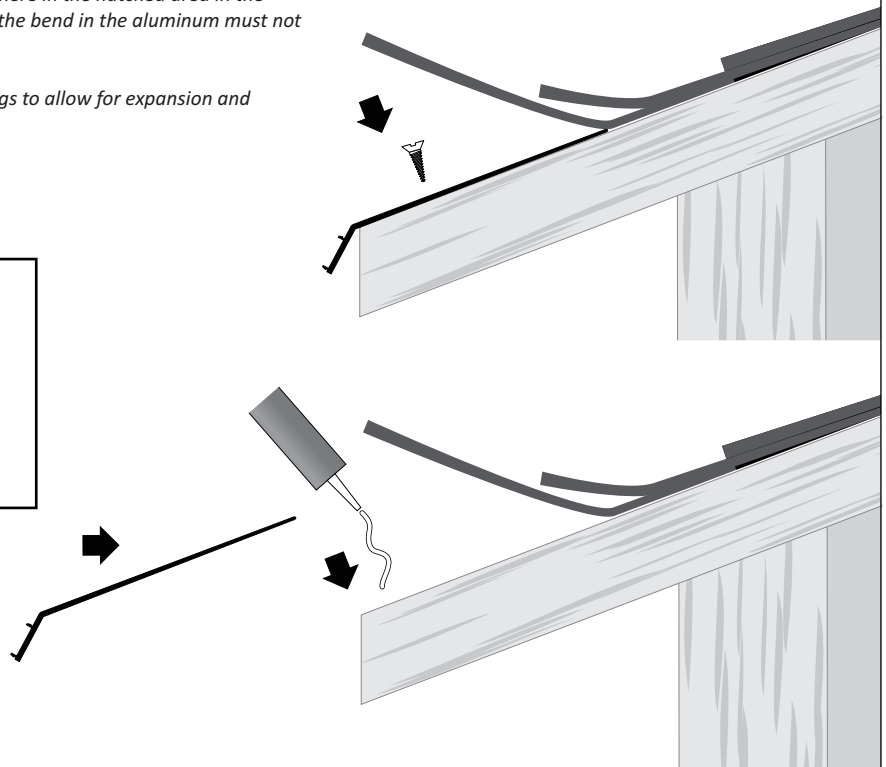
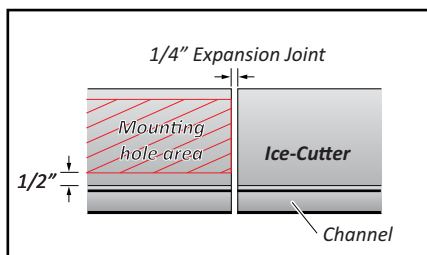
- Carefully peel back roofing material, exposing the roof substrate to accommodate Ice-Cutter.



2

- Using screws or flexible adhesives, attach the Ice-Cutter flashing to the roof substrate. Mounting holes may be installed anywhere in the hatched area in the illustration below. Note a minimum of 1/2" from the bend in the aluminum must not be used for attachment.

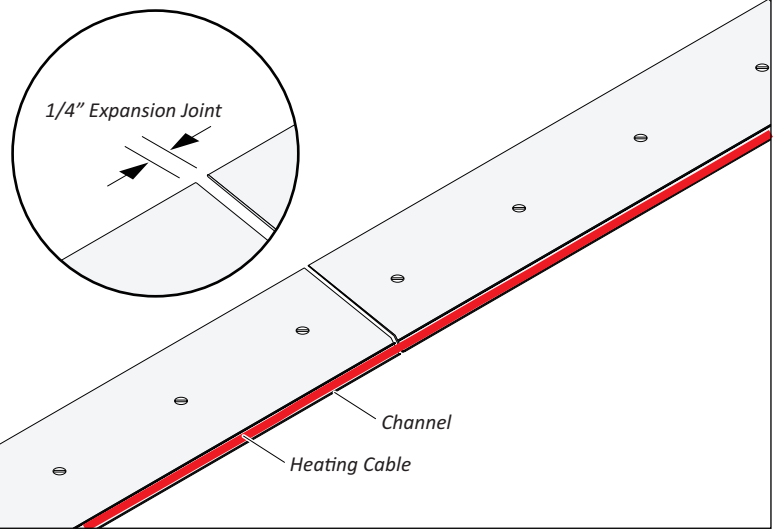
**IMPORTANT:** Allow 1/4" spacing between flashings to allow for expansion and contraction of the aluminum.



## Ice-Cutter Installation Recommendations

3

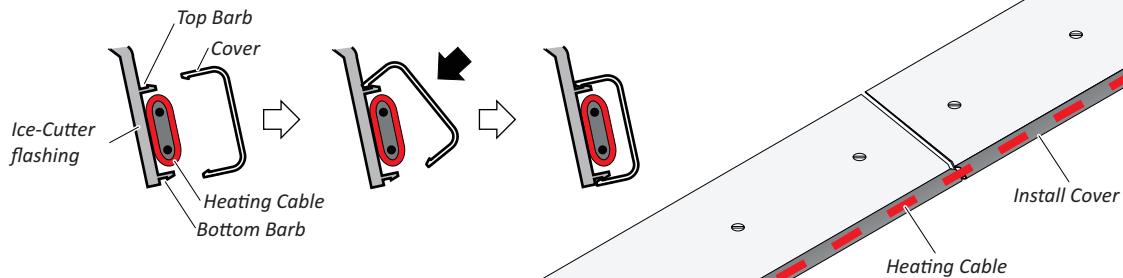
- Lay heating cable in the channel.



4

### Installing the cover assembly

- Make sure there is no debris in the barbed areas. Use a brush or toothbrush to remove any debris. (Even the smallest stone or grain of sand must be removed as it is a very fine barb.)
- Position the cover by fitting the top barb first.
- Snap the cover down onto the bottom barb. Offset pump pliers work nicely to complete the cover installation. You can protect the cover from damage by taping the teeth on the pump plier.



## Ice-Cutter Installation Recommendations

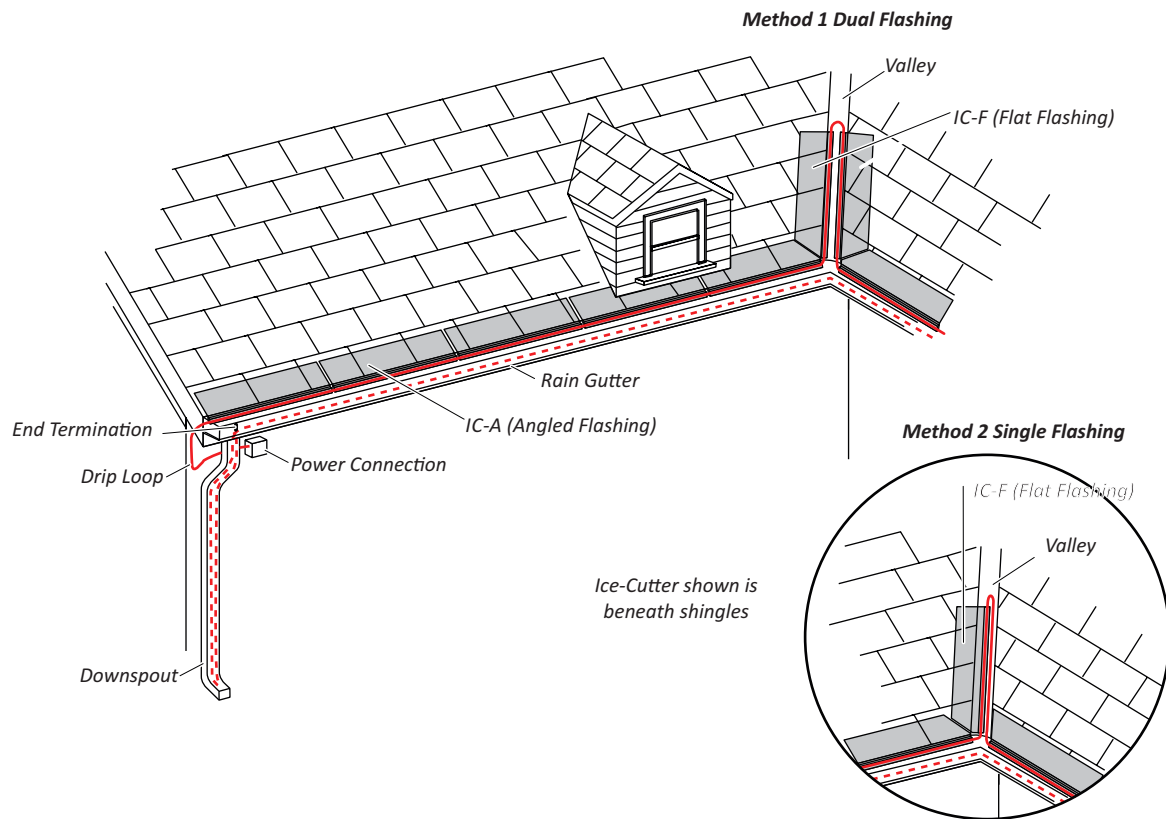
5

- Valleys can also be heat traced using Ice-Cutter IC-F (flat flashing). Use one of the two methods recommended below.

*Method 1: Use flashing with the channel on both edges of the valley. Run heating cable up one side and loop it at the top, then down the other side.*

*Method 2: Use a single run of flashing with the channel lined up in the middle of the valley. Run the heating cable up the channel of the flashing, then terminate it, or run it back down inside the valley to continue in other Ice-Cutter flashing.*

- Connect the heating cable to a power source using a drip loop.
- Complete the installation by looping the cable back through the rain gutter and terminate the heating cable at the bottom of the down spout using an appropriate end.



TAD & Associates, Inc.  
PO Box 2170  
Canyon Lake, Texas 78133-0009  
Phone: 210-679-8447  
Fax: 210-679-8847  
[www.tad-associates.com](http://www.tad-associates.com)

**Important:** All information, including illustrations, is believed to be reliable. Users, however, should independently evaluate the suitability of each product for their particular application. TAD & Associates, Inc. makes no warranties as to the accuracy or completeness of the information, and disclaims any liability regarding its use. TAD & Associates' only obligations are those in the Terms and Conditions of Sale for this product, and in no case will TAD & Associates be liable for any incidental, indirect, or consequential damages arising from the sale, resale, use, or misuse of the product. Specifications are subject to change without notice. In addition, TAD & Associates reserves the right to make changes—without notification to Buyer—to processing or materials that do not affect compliance with any applicable specification.